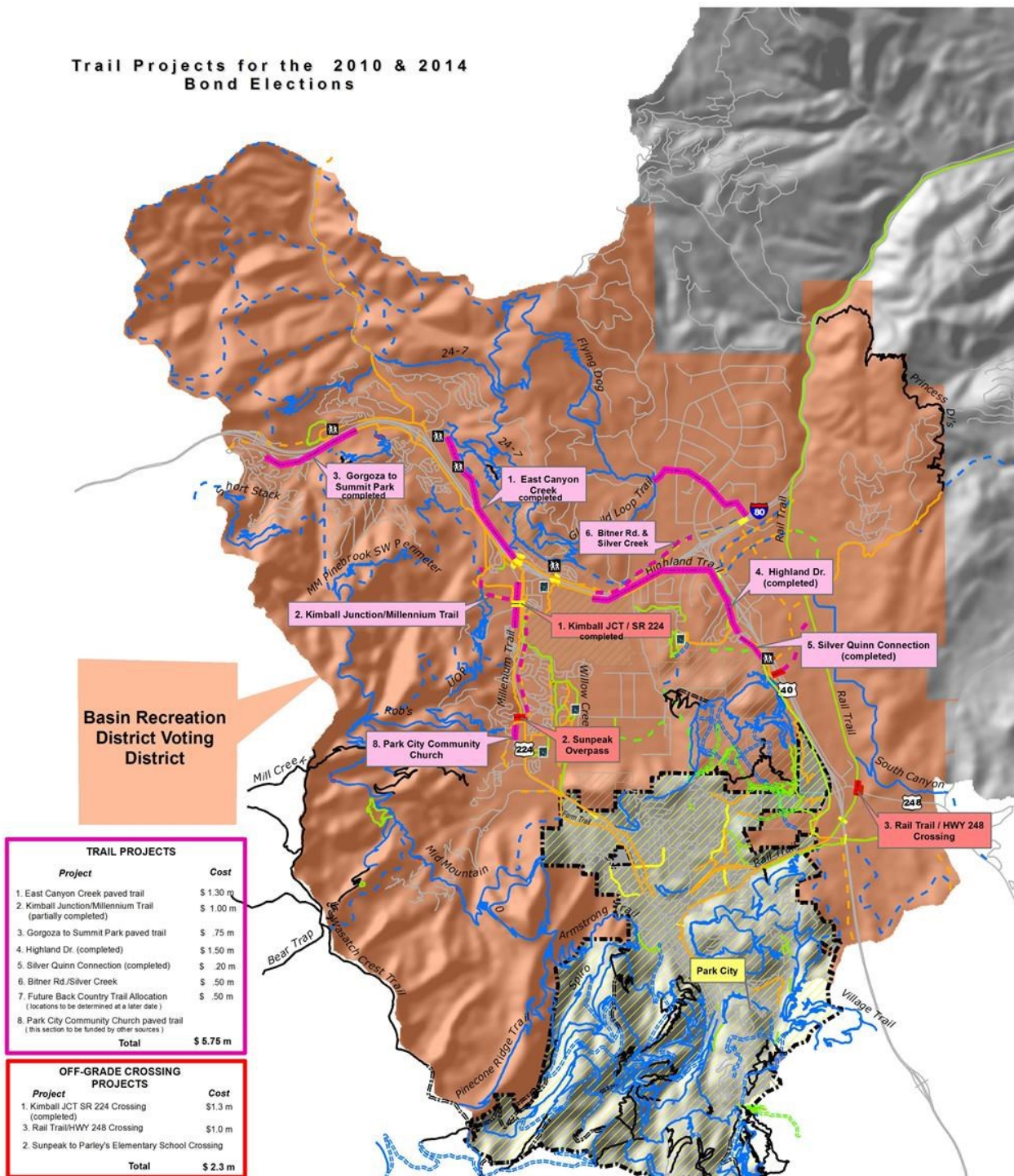


Trail Projects for the 2010 & 2014 Bond Elections



Basin Recreation District Voting District

TRAIL PROJECTS	
Project	Cost
1. East Canyon Creek paved trail	\$ 1.30 m
2. Kimball Junction/Millennium Trail (partially completed)	\$ 1.00 m
3. Gorgoza to Summit Park paved trail	\$.75 m
4. Highland Dr. (completed)	\$ 1.50 m
5. Silver Quinn Connection (completed)	\$.20 m
6. Bitner Rd./Silver Creek	\$.50 m
7. Future Back Country Trail Allocation (locations to be determined at a later date)	\$.50 m
8. Park City Community Church paved trail (this section to be funded by other sources)	
Total	\$ 5.75 m

OFF-GRADE CROSSING PROJECTS	
Project	Cost
1. Kimball JCT SR 224 Crossing (completed)	\$1.3 m
3. Rail Trail/HWY 248 Crossing	\$1.0 m
2. Sunpeak to Parley's Elementary School Crossing	
Total	\$ 2.3 m

Hard Surface
Proposed = 53 miles
Existing = 17.5 miles
Urban Soft Surface
Proposed = 7 miles
Existing = 7.24 miles
Natural Surface
Proposed = 110 miles
Existing = 104.5 miles

1. This map is intended for Master Planning purposes only. The locations of undeveloped non-motorized trail corridors shown are approximate. They are intended to provide Community-wide trail system connectivity over time.

2. Trails shown are a part of the Snyderville Basin General Plan Goals and Objectives for each Neighborhood Planning Area. Trails are an allowed use in all Zone Districts.

3. Community-wide trail system development is consistent with the goals and objectives of the Recreation and Trails Master Plan including, but not necessarily limited to, providing connections to previously constructed trails and other critical link points such as off grade crossings of the major thoroughfares (I-80, Highway 40, SR-224 and SR-248) and jurisdictional boundary connections (Park City Municipal Corporation Trail System, Great Western Trail, Rail Trail, Jordanelle State Park, Summit County, Wasatch County, Morgan County and Salt Lake County).

4. The width of the trail corridor or trail proper is not shown on this map. The standard easement width for all trails is twenty feet (20'), and the final width of the trail tread will be established during site-specific planning reviews. Trails are developed in accordance with the Basin Recreation Community-wide Trail System Development Standards.

5. Potential adverse impacts to the environment and adjacent private property owners are minimized as much as possible using trail placement, posting of rules and signage to instruct trail users to stay on the trail.

6. Trail corridors may vary slightly to avoid natural resource constraints such as wetlands and steep slopes. Final trail corridors are established with the appropriate property owner and regulatory agencies at the time of trail development or development project approval. Due to wetland and other environmental constraints, the Army Corps of Engineers may require bridges and boardwalks. Bridging and boardwalks will comply with Corps requirements and the Basin Recreation Community-wide Trail System Development Standards.

7. Trailheads are considered an important component of Community-wide trail system improvements. Increases in system mileage will require identification of an existing trailhead to serve a population trail segment, or evaluation of the need to develop a new trailhead.

Trail Legend

- Trail Bond Project
- Trail Bond Project Completed
- Natural Surface Proposed
- 8-foot Urban Soft Surface Proposed
- Hard Surface - Proposed
- Proposed Off-Grade Crossing
- Off-Grade Crossing
- SBSRD Boundary
- Trailheads
- Basin Rec Facilities

* Solid Lines Denote Existing Trails

Revised September 10, 2013

